

GOVERNMENT OF NATIONAL CAPITAL TERRITORY OF DELHI



**INDEX OF
INDUSTRIAL PRODUCTION
(2011-2012)**

BASE YEAR: 2004-05

**DIRECTORATE OF ECONOMICS & STATISTICS
VIKAS BHAWAN –II, 3rd FLOOR, “B” BLOCK
UPPER BELA ROAD, NEAR METCALF HOUSE , DELHI – 110054**



GOVERNMENT OF NATIONAL CAPITAL TERRITORY OF DELHI

**INDEX OF
INDUSTRIAL PRODUCTION
2011-12**

(BASE YEAR: (2004-05))

**DIRECTORATE OF ECONOMICS & STATISTICS
VIKAS BHAWAN –II, 3rd FLOOR, “B” WING
BELA ROAD, NEAR METCALF HOUSE , DELHI – 110054
Tel: 23812844, Fax:23812851, E-mail : dires@nic.in
Visit our website www.delhi.gov.in**

P R E F A C E

The present report “Index Of Industrial Production” 2011-12 is brought out by this Directorate as per the new base year 2004-2005. This brochure is second in new series with base year 2004-2005 presenting the physical growth of the registered manufacturing sector of Delhi during the year 2011-12. This methodology is devised by Ministry of Statistics & Programme Implementation, Govt. of India

The State Level IIP serves as a vital quantitative indicator of trends in the registered manufacturing segment in the short term. This is a useful and instant tool in the hands of Planners and Policy makers to gauge the health of the industry, as the final statement on this sector comes with publication of results of Annual Survey of Industry with a time lag of 2 Yrs. The index of Industrial Production also serves as a deflator for estimation of industrial production at constant prices. This report gives trends in index month-wise, industry division-wise and broad sub sector-wise.

This publication was brought out by the ASI /IIP unit of this Directorate under the guidance of Shri N.T. Krishna Deputy Director, Shri Desh Bandhu Gupta Asstt. Director whereas Shri K.R. Chhibber Statistical Officer has supervised the work at branch level. Shri Pradeep Kr. Dalal, Shri Rakesh Kumar, Ms. Aarti Arora, Ms. Poonam Bansal, Shri Shahid, Shri.Rupender Singh Tomar and Shri. Killamsetty Prasanth Kumar, Statistical Assistants made strenuous efforts in collection of data from the industrial units. Programming work has been done under the guidance of Shri Praveen Srivastava Programmer EDP unit. This Directorate is in-debited to the co-operation extended by all industries units for supply of data periodically. This Directorate is also grateful for the help extended by the officers of the Labour Department of the GNCTD.

Dr. B.K. SHARMA
DIRECTOR

Delhi
April, 2012

CONTENTS

CHAPTER	PAGE
I. Introduction	1
II. Methodology	2-4
III. Brief analysis of Index of Industrial production (2011-12)	10
IV. Use Based Index of Industrial Production (2011-12)	19
 GRAPHICAL REPRESENTATION	
[G1] Weighting Diagram at 2-digit level of NIC-2004	9
[G2] Month-Wise index of Industrial Production for different sectors	12
[G3] Index of Industrial Production at 2-digit level of NIC-2004	13
[G4] Index of Industrial Production as per Use-Based Classification	20
[G5] Weighting diagram as per Use-Based Classification	21
 TABLES	
2.1 Item Basket with weights for index of Industrial Production	5-7
2.2 Distribution of weights at 2-digit level as per NIC-2004	8
3.1 Month-wise Index of Industrial Production in major sectors of Industry	11
3.2 Index Numbers at 2 Digit Level of NIC-2004	14
3.3 Index Numbers at 5 Digit / Item Level of NIC-2004	15-18
4 Index of Industrial Production with Use Based Classification of Items of production	22-29

CHAPTER-I

INTRODUCTION

Index of Industrial Production (IIP) is of immense use for measuring the industrial development of a State/Territory. The index indicates relative changes over the time in the volume of production in non-agricultural commodities and it is effective tool to measure the trend of current Industrial Production. At the National level, the index of industrial production is being compiled by the Central Statistical Organisation, Govt. of India and is released on monthly basis. This index, however, does not serve the purpose for evaluating the industrial growth of a State/Union Territory. Therefore, the Directorate of Economics and Statistics has been compiling/releasing the index of industrial production for the National Capital Territory of Delhi on quarterly/annual basis since 1976.

In the first series, 1970 was the base year for compiling the IIP both by the Central Statistical Organisation & Directorate of Economics and Statistics. The base year was, however, shifted to 1980-81 in the year 1987 as per recommendations made by the Working Group so as to accommodate the latest structural developments that have taken place in the industrial profile during the seventies. Accordingly the Directorate of Economics and Statistics also adopted the base year of 1980-81 since 1989-90.

The main lacuna of State Level Index of Industrial Production (IIP), is that the Indices lacked comparability due to use of different base year, periodicity & data sources etc. The need for a comparable state level IIP to facilitate studies on the state-wise performance of Industrial sector has been felt for quite some time. Accordingly a Technical Advisory Committee (TAC) was constituted in June, 1995 to formulate guidelines and methodology for preparation of comparable IIP. On the basis of recommendations of TAC it was decided to bring forward the base year from 1980-81 to 1993-94. Subsequently the base year was revised from 1993-94 to 1999-2000 and now it has been shifted to 2004-05 to compile comparable IIP.

Accordingly initial guidelines were prepared in May 2010 and the item basket & weighting diagram were prepared and got approved by CSO. This is the second report for Index of Industrial Production with new base year 2004-2005.

CHAPTER-II

METHODOLOGY

1. SELECTION OF ITEM BASKET:

The item basket for the revised series with base year 2004-2005 has been prepared as per the guidelines received from Central Statistical Organization. Items are identified in such a manner that all the items having at least .20% contribution in the total output of respective 2-digit categories of NIC 2004 are selected. Further, the items in the data base of ASI in 2004-2005 are assigned use based codes i.e. basic goods, inter-mediate goods, capital goods and consumer goods to arrive at item basket of each use based category.

The overall size of item basket has been decided keeping in view the manageability of the compilation. It was ensured that items included in the item basket are distinct in nature so that problem will not arise at the data collection stage. It has also been kept in mind that finally selected items are of the nature for which a regular and steady flow of production data will be available.

Finally selected items are classified under 4-digit industry groups which in turn classified under 3-digit industry groups and further classified under 2-digit industry groups for compilation of indices at different stages.

2. ALLOCATION OF WEIGHTS:

In allocation of weights, total weight is taken as 1000 and this is apportioned in two industrial sectors namely registered manufacturing and electricity. The sector weights are then allocated to its 2-digit industry groups and so on for lower level industry sub-groups. Lastly the 4-digit level weights are distributed to the selected items falling under the respective 4-digit classes. The total weight of 1000 in the new series has been distributed to registered manufacturing and electricity sectors on the basis of Gross Value Added (GVA) for base year i.e. 2004-2005. The weight of registered manufacturing sector is further distributed to various 2-digit industry groups (15-36) of NIC 2004 in proportion to their GVA figures. The 2-digit level weights are further distributed to represent 3-digit groups which in turn distributed to 4-digit classes within the 3-digit respective groups represented in the item basket. Finally 4-digit level weights are distributed to selected items in the respective 4-digit classes in proportion to item-wise GVO figures. It is classified that weight allocation at item level has been done in proportion to item-wise GVO because item-wise GVA figures are not available.

The weighting diagram prepared in this manner has also been used for arriving at indices for different use based categories.

3. SAMPLING DESIGN:

The operating units in the item-wise frame of ASI manufacturing products n.e.c. were removed from the frame. For the remaining functional units all value figures were converted into percentage with respect to the total value of that 2 digit NIC code. All the items having less than 2.5% contribution were removed from the item basket, however some prominent items having less than 2.5% contribution have been included in the item basket so that the item basket becomes more realistic. Further selection of larger units has been done to ensure better response in the collection of regular monthly data.

4. COLLECTION OF DATA:

For preparation of the Current Series (Base year:2004-2005) of Index of Industrial Production, for the National Capital Territory of Delhi, 270 industrial units have been selected for collection of production data in respect of 105 items. The base year (2004-2005) production data in respect of the selected items have been provided by CSO (IS) wing Kolkata. Again, for collection of monthly data for the subsequent period i.e. from April 2009 onwards the Industrial Units were approached / requested for submitting the monthly production returns of the selected items. Out of 270 units selected, 4 units did not submit their production report. Out of total the proportion of response achieved through persistent efforts was 98.51% during previous year, whereas 100% response was achieved during current year.

Year	Industrial Units Responded	Industrial Units Not responded	Closed Units	Total
2010-11	266	4	-	270
2011-12	264	-	6	270

5. ESTIMATION PROCEDURE:

To overcome the problem of delayed response/non-response the following procedure has been adopted for estimation of production of such non-responding units on monthly basis. Suppose out of say “n” units selected for a particular month n_1 units give timely response and the remaining of n_2 ($n-n_1$) units might not submitted the return for the particular month in time. The production of item of these n_2 non-responding units has been estimated on the basis of the trend in production of the n_1 responding units.

The trend in an item's production is determined by taking the relative change in the monthly production of unit vis-a-vis the average monthly production of the same set of unit. Thus, this relative change in production of responding units is used to determine the production of non-responding units during a particular month.

6. CALCULATION OF INDEX:

The Index of Industrial Production is calculated as Weighted Arithmetic Mean of the production relatives in respect of selected items mathematically.

$$I = \frac{\sum R_i \times W_i}{\sum W_i}$$

Where I is the index

R_i is the production relative of item i

and W_i is the weight allotted to it.

The production relative (R_i) of ith item for the month has been calculated by using the following formula:

$$R_i = \frac{P_{ic}}{P_{io}} \times 100$$

Where P_{ic} = Production of ith item in the current month.

P_{io} = Production of the ith item in the base month.

TABLE 2.1 ITEM BASKET WITH WEIGHTS FOR INDEX OF INDUSTRIAL PRODUCTION
(BASE YEAR 2004-05=100)

SL NO	NIC2004	ITEM NAME	WEIGHT
A- MANUFACTURING			
1	15116	buffalo meat, fresh/frozen	7.2302
2	15204	milk, skimmed or pasturised, non-flavoured	18.2317
3	15204	Icecream	4.2260
4	15311	gram powder (besan)	1.6086
5	15311	wheat flour (atta)	1.0770
6	15311	Maida	0.9199
7	15311	pulses, broken (churi/chunni)	0.3422
8	15311	bran, wheat	0.2549
9	15311	sooji (rawa)	0.1408
10	15313	gram dal	1.3243
11	15313	moong , milled	0.6338
12	15313	arhar, milled (arhar dal)	0.2923
13	15313	masur, milled	0.2906
14	15412	biscuit, cookies	16.6655
15	15433	sweetmeat confectionery	2.5216
16	15543	mineral water, edible	1.4306
17	15549	beverages, base	3.9497
18	16005	Snuff	0.2928
19	17211	bed cover, cotton	4.0956
20	17211	furnishing cloth, cloth	2.2063
21	17214	Quilts	1.7397
22	17219	fabrics/cloth, rayon (not-knitted)	2.7142
23	17219	cloth, plastic coated	2.4587
24	17219	hosiery goods, others - cotton	2.2883
25	17299	neck labels, cotton	10.3652
26	18101	garments, knitted- cotton	82.6284
27	18101	dress,others- cotton	46.6434
28	18101	garments, terene	21.7217
29	18104	garments, leather	10.5172
30	19201	foot wear, others, leather	4.3644
31	19201	shoe, racer	1.4756
32	19202	chappals, plastic / pvc	9.6529
33	19202	shoes, plastic / pvc	6.1586
34	19202	footwear, mixed materials	3.3784
35	19202	chappals, rubber (incl. hawaii chappals)	3.3013
36	21022	boxes, corrugated sheet	4.2417
37	21093	greeting cards	5.3711
38	22121	Newspaper	55.3735
39	22219	journals / periodicals	14.5436
40	22219	Diaries	11.6511
41	22219	printed lables	9.4160
42	22219	cartons / boxes, paper	4.9547
43	22219	covers, paper	4.6177

TABLE 2.1 ITEM BASKET WITH WEIGHTS FOR INDEX OF INDUSTRIAL PRODUCTION
(BASE YEAR 2004-05=100)

44	22222	Books	2.4820
45	24139	plastic granules	25.9425
46	24223	ink, printing	0.0357
47	24232	vaccine for polio	57.7637
48	24233	syrup flavoured or not	7.0741
49	24241	detergent powder	1.1416
50	24243	detergent cake	1.3032
51	24248	Agarbattis	1.8255
52	25202	fabrics, polyethylene fabrics	6.4400
53	25202	bag, polythene	3.6046
54	25206	components, plastic	0.9874
55	25208	helmet, safety	3.0251
56	26999	welding rods	1.3224
57	27141	frame for door/ window, iron /steel	0.7961
58	27163	strips, stainless steel	1.9288
59	27163	plates/flats/sheet etc., stainless steel.	0.4259
60	27190	wire, iron / m.s	1.5249
61	27201	wire, copper coated / enameled	0.8761
62	27310	ingot, iron /steel	0.9518
63	28112	cabinet, iron /steel	3.0845
64	28112	steel structures	1.5717
65	28910	Flange	0.9148
66	28910	castings & forging, iron/steel	0.6716
67	28994	cistern fittings, iron /steel	16.5032
68	28994	sanitary fittings, non-ferrous-others	4.4030
69	28997	pressure cooker	1.7581
70	28999	elastic rail clips	1.0748
71	29131	bearing, ball/roller	3.0870
72	29191	resistance /resistor	6.5698
73	29196	weighing scales	2.3169
74	29198	generator /alternator	2.6513
75	29219	Sprinkler	2.2934
76	29219	spares,agricultural machinery-others	0.8065
77	29229	pressing machine	1.0090
78	29231	machinery, others	0.1047
79	29267	washing machines /laundry mach	1.0344
80	29297	machine tool & accessories-others	3.7187
81	29305	Geysers	3.0519
82	29308	gaskets & gland fittings	2.0309
83	30007	computer peripherals	1.3275
84	31200	distribution boards	8.1642
85	31200	stabilizer/ constant voltage regulators	6.3590
86	31300	electrical wire & cables	11.2881
87	31300	cable, pvc insulated	6.2158

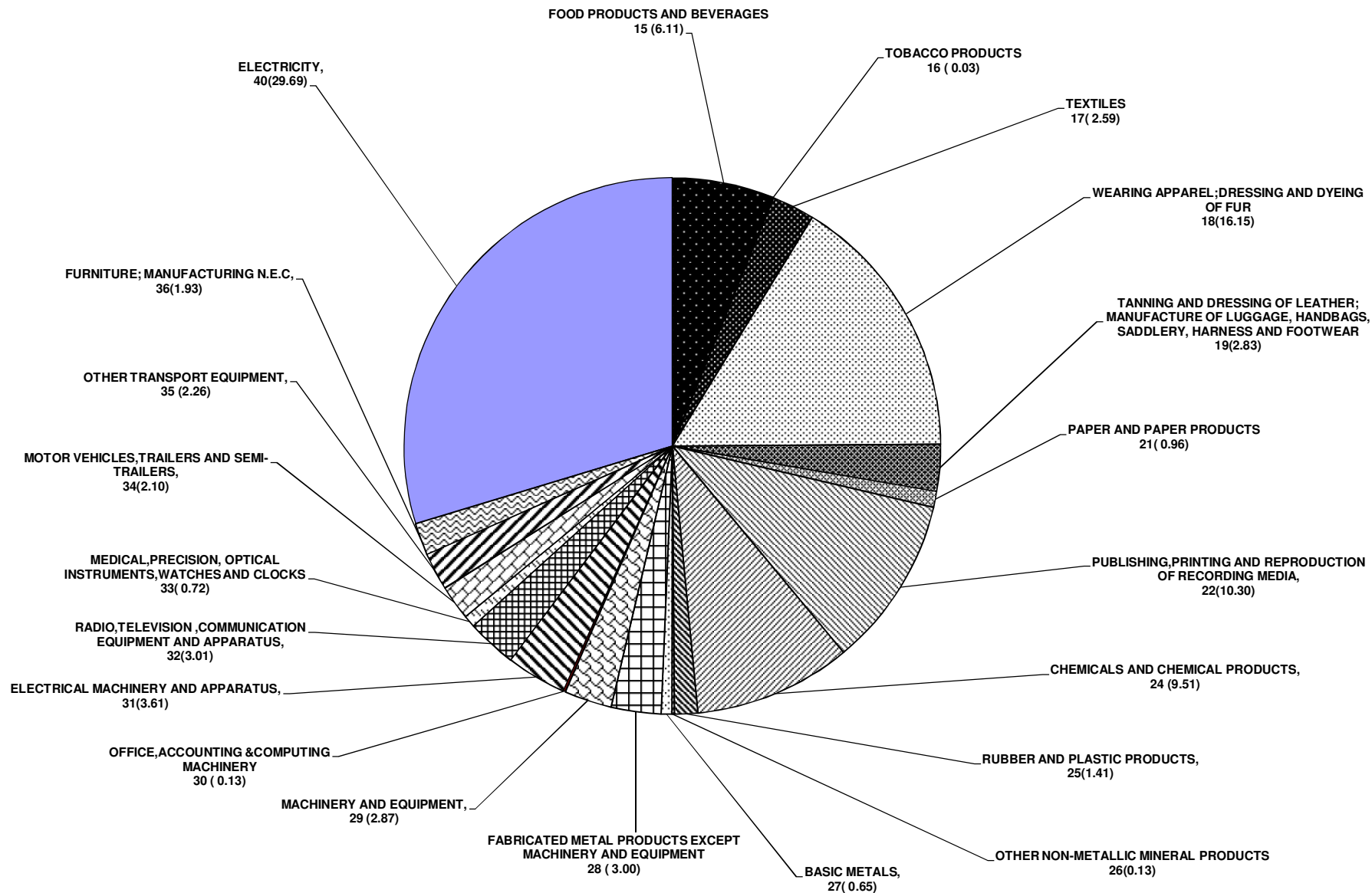
TABLE 2.1 ITEM BASKET WITH WEIGHTS FOR INDEX OF INDUSTRIAL PRODUCTION
(BASE YEAR 2004-05=100)

88	31908	welding set	4.1177
89	32105	semiconductor device ex. transistor, diode & ic	9.4362
90	32201	cabinet, plastic	0.2161
91	32209	Transformer	0.4400
92	32309	disc, compact	9.7058
93	32309	Amplifier	8.1486
94	32309	Microphone	2.1663
95	33122	meter, electric –others	7.1674
96	34300	motor vehicle,others & parts, n.e.c	14.9299
97	34300	piston rings	2.6309
98	34300	water pump assembly	2.1875
99	34300	cylinder head & block	1.2668
100	35914	clutch plates	22.5898
101	36911	jewellery / ornament, gold -others	1.6118
102	36991	dot pen with refill	8.5347
103	36991	tipped nibs, fountain pen	5.9490
104	36991	pen, signature	3.1958
		TOTAL MANUFACTURING	703.0684
		B- ELECTRICITY	
105	40000	Electricity	296.9316
		GRAND TOTAL	1000

TABLE 2.2 DISTRIBUTION OF WEIGHT AT 2-DIGIT LEVEL OF NIC 2004 FOR COMPLIATION OF IIP OF NCT DELHI WITH BASE YEAR 2004-2005

NIC2004	DESCRIPTION	GVA(Rs in Crore)	Weight
15	MANUFACTURE OF FOOD PRODUCTS AND BEVERAGES	24226	61.13967687
16	MANUFACTURE OF TOBACCO PRODUCTS	116	0.292751693
17	MANUFACTURE OF TEXTILES	10250	25.8681453
18	MANUFACTURE OF WEARING APPAREL;DRESSING AND DYEING OF FUR	63997	161.5106043
19	TANNING AND DRESSING OF LEATHER; MANUFACTURE OF LUGGAGE, HANDBAGS, SADDLERY, HARNESS AND FOOTWEAR	11226	28.33129747
21	MANUFACTURE OF PAPER AND PAPER PRODUCTS	3809	9.612855164
22	PUBLISHING,PRINTING AND REPRODUCTION OF RECORDING MEDIA	40828	103.0385011
24	MANUFACTURE OF CHEMICALS AND CHEMICAL PRODUCTS	37677	95.08625467
25	MANUFACTURE OF RUBBER AND PLASTIC PRODUCTS	5570	14.05712871
26	MANUFACTURE OF OTHER NON-METALLIC MINERAL PRODUCTS	524	1.322430062
27	MANUFACTURE OF BASIC METALS	2577	6.503630286
28	MANUFACTURE OF FABRICATED METAL PRODUCTS EXCEPT MACHINERY AND EQUIPMENT	11880	29.98181133
29	MANUFACTURE OF MACHINERY AND EQUIPMENT	11362	28.6745236
30	MANUFACTURE OF OFFICE,ACCOUNTING &COMPUTING MACHINERY	526	1.327477505
31	MANUFACTURE OF ELECTRICAL MACHINERY AND APPARATUS	14322	36.14473921
32	MANUFACTURE OF RADIO,TELEVISION AND COMMUNICATION EQUIPMENT AND APPARATUS	11932	30.11304485
33	MANUFACTURE OF MEDICAL,PRECISION AND OPTICAL INSTRUMENTS,WATCHES AND CLOCKS	2840	7.167369038
34	MANUFACTURE OF MOTOR VEHICLES,TRAILERS AND SEMI-TRAILERS	8327	21.01502887
35	MANUFACTURE OF OTHER TRANSPORT EQUIPMENT	8951	22.58983108
36	MANUFACTURE OF FURNITURE; MANUFACTURING N.E.C	7644	19.29132709
	MANUFACTURING	278584	703.0684282
40	ELECTRICITY	117769	296.9315718
	TOTAL	396353	1000

**[G-1] INDEX ON INDUSTRIAL PRODUCTION DELHI
BASE YEAR:2004-05
WEIGHTING DIAGRAM AT 2 DIGIT LEVEL OF NIC-2004**



CHAPTER-III

A BRIEF ANALYSIS OF IIP

For the purpose of compiling the index, the industrial sector has been divided into manufacturing and electricity sectors with the weights of 703.0684 and 296.9316 respectively out of total weight 1000. The manufacturing sector has further, been divided into 20 major industrial groups at 2 digit level excluding electricity.

SALIENT FEATURES:

The Annual Average Index of Industrial Production has touched 123.21 during the year 2011-12 as against 117.17 (revised due to technical corrections) in the previous year and thereby registered a growth of 5.16%. From Table-3.1 it is clear that except the month October, December. & February remaining months has shown the increasing trend throughout the year. Maximum percentage increase in production is noticed in the month of August 2011. Similarly maximum percentage declined in production was noticed in the month of December-2011. Manufacturing sector has shown an increase of 5.40% where as electricity sector has shown an increase of 4.23%. despite shutting down of one unit of Indraprastha Power Generation Ltd. Moreover, the Bawana unit of Indraprastha Power generation is likely to start commercial production of electricity very shortly.

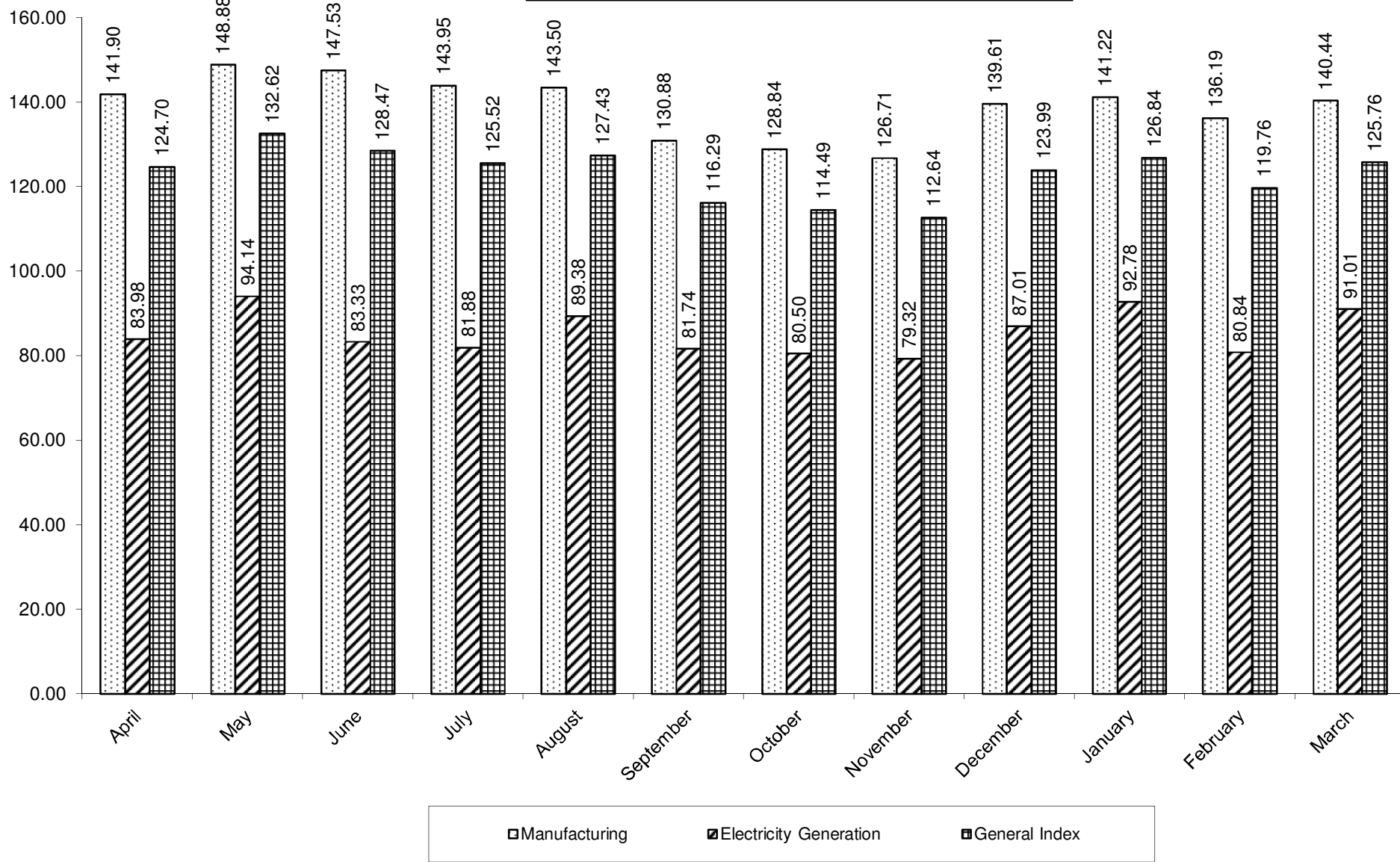
It is evident from table 3.2 that out of 21 groups at 2 digit level, growth has been observed in 11 groups and for the remaining 10 groups a decline has been observed in manufacturing activity when compared with previous year 2010-11. Maximum growth of 36.51% has been observed in respect of Manufacture of Motor vehicle, Trailers & Semi Trailers (34) followed by Manufacture of other Transport Equipment (35) and Manufacturing of Rubber & Plastic Product (25) where a growth of 23.67% & 15.70% has been observed respectively. For remaining groups where growth is observed percentage increase with the previous year varies from 0.79% to 14.37%.

It may be seen that maximum decline of 36.53% has been observed in case of Manufacture of Chemical & Chemical Product (24) followed by Manufacturing of Medical, Precision and Optical Instruments, Watches & Clocks (33) and Manufacturing of Papers & Paper Products (21) where a decline of 34.35% & 31.54% has been observed respectively. For remaining groups decline varies from 0 to 19.59%.

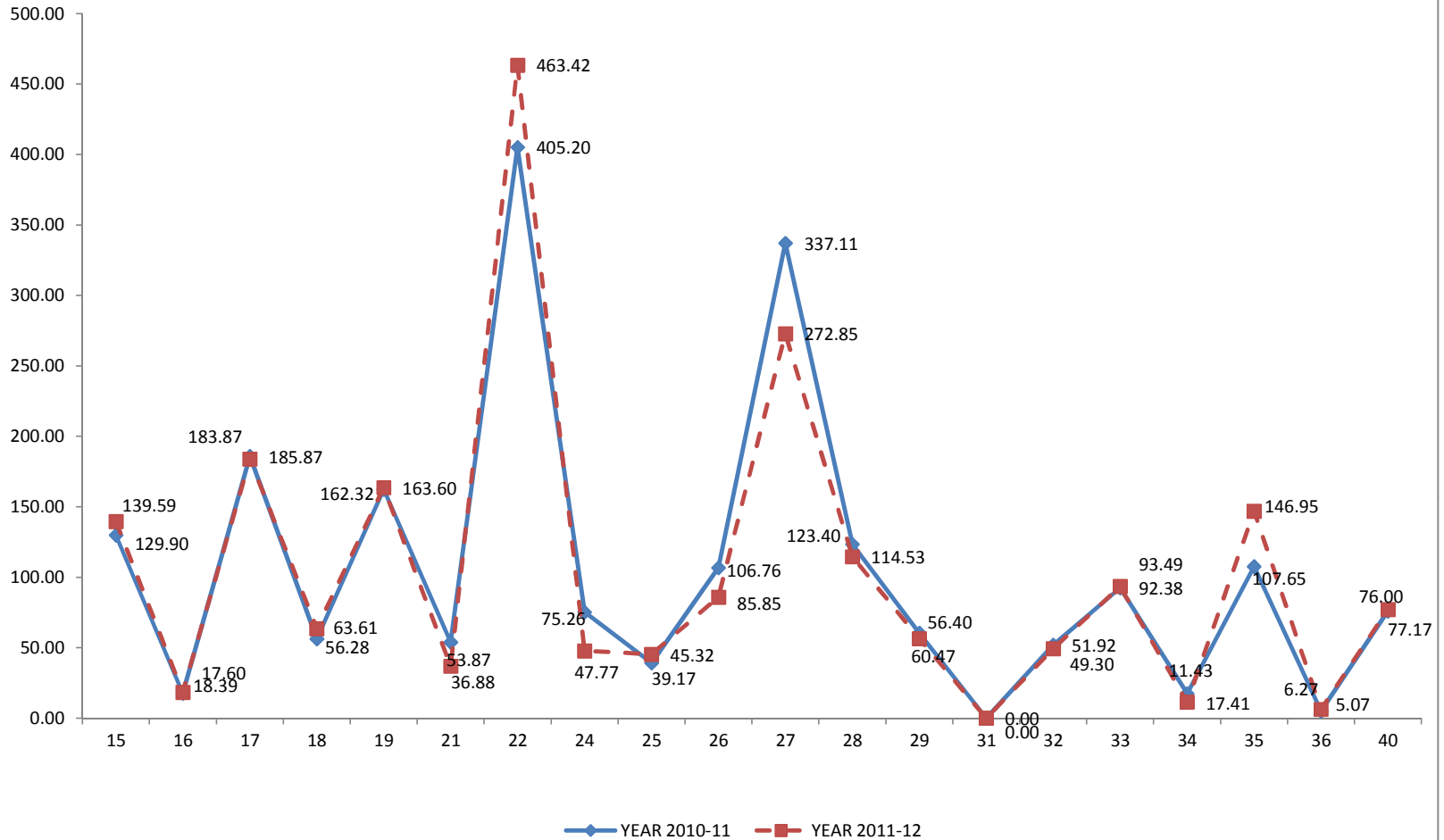
**TABLE 3.1 : MONTH WISE INDEX OF INDUSTRIAL PRODUCTION IN
MAJOR SECTORS OF INDUSTRY
(BASE : 2004-2005=100)**

Major Sectors									INCREASE/D ECREASE OVER THE PREVIOUS YEAR (PERCENT)
Month	Manufacturing		(Inc/Dec)	Electricity		(Inc/Dec)	General		%
	2010-11	2011-12	%	2010-11	201-12	%	2010-11	2011-12	
April	132.88	141.90	6.79	93.00	83.98	-9.70	121.04	124.70	3.03
May	127.32	148.88	16.93	83.20	94.14	13.15	114.22	132.62	16.11
June	126.11	147.53	16.99	85.89	83.33	-2.98	114.17	128.47	12.52
July	131.19	143.95	9.73	81.29	81.88	0.73	116.37	125.52	7.87
August	123.98	143.50	15.75	75.74	89.38	18.01	109.66	127.43	16.21
September	126.27	130.88	3.65	65.76	81.74	24.30	108.30	116.29	7.38
October	132.30	128.84	-2.61	81.17	80.50	-0.83	117.12	114.49	-2.25
November	118.84	126.71	6.63	68.37	79.32	16.02	103.86	112.64	8.46
December	148.49	139.61	-5.98	93.78	87.01	-7.22	132.24	123.99	-6.24
January	137.46	141.22	2.74	94.85	92.78	-2.18	124.81	126.84	1.63
February	135.30	136.19	0.66	85.34	80.84	-5.27	120.46	119.76	-0.58
March	143.99	140.44	-2.47	75.90	91.01	19.91	123.77	125.76	1.61
Annual Average	132.01	139.14	5.40	82.02	85.49	4.23	117.17	123.21	5.16

**[G-2] INDEX OF INDUSTRIAL PRODUCTION 2011-12
(BASE YEAR:2004-05)**



[G-3]INDEX NUMBER OF INDUSTRIAL PRODUCTION 2010-11 & 2011-12
(Base Year 2004-05=100)
AT 2 DIGIT LEVEL NIC 2004



**TABLE 3.2 : INDEX NUMBER OF INDUSTRIAL PRODUCTION AT 2 DIGIT LEVEL OF NIC 2004 DELHI (Base Year 2004-05=100)
(APRIL 2011 TO MARCH 2012)**

SNO	NIC CODE	DESCRIPTION	NUMBER OF UNITS FURNISHED THE DATA	WEIGHT	ANNUAL AVERAGE		MONTHWISE IP FOR YEAR YEAR 2011-12												INCREASE / DECREASE PERCENTAGE
					2010-11	2011-12	APRIL	MAY	JUNE	JULY	AUG	SEP	OCT	NOV	DEC	JAN	FEB	MAR	
1	15	MANUFACTURE OF FOOD PRODUCTS AND BEVERAGES	29	61.14	129.90	139.59	142.93	150.45	141.85	143.81	143.69	143.38	151.88	126.50	126.76	129.29	133.15	141.33	7.46
2	16	MANUFACTURE OF TOBACCO PRODUCTS	1	0.29	17.60	18.39	17.33	16.22	17.55	20.01	17.38	16.47	15.04	20.66	19.12	19.34	21.09	20.45	4.49
3	17	MANUFACTURE OF TEXTILES	10	25.87	185.87	183.87	217.87	203.35	155.62	141.77	177.52	176.66	204.48	215.63	194.00	187.02	178.74	153.77	-1.08
4	18	MANUFACTURE OF WEARING APPAREL,DRESSING AND DYEING OF FUR	69	161.51	56.28	63.61	77.73	75.11	65.99	56.87	55.82	47.02	40.75	45.91	50.07	81.95	82.52	83.55	13.02
5	19	TANNING AND DRESSING OF LEATHER; MANUFACTURE OF LUGGAGE, HANDBAGS, SADDLERY, HARNESS AND FOOTWEAR	23	28.33	162.32	163.60	172.72	192.19	208.67	110.03	142.89	138.79	135.01	143.62	214.17	187.29	165.94	151.82	0.79
6	21	MANUFACTURE OF PAPER AND PAPER PRODUCTS	8	9.61	53.87	36.88	41.01	34.18	33.30	29.98	39.80	51.11	37.34	40.76	41.09	33.25	34.37	26.38	-31.54
7	22	PUBLISHING,PRINTING AND REPRODUCTION OF RECORDING MEDIA	18	103.04	405.20	463.42	454.03	463.49	455.43	467.43	471.96	454.39	455.50	464.88	507.86	470.07	445.63	450.37	14.37
8	24	MANUFACTURE OF CHEMICALS AND CHEMICAL PRODUCTS	10	95.09	75.26	47.77	24.43	89.30	124.83	126.23	99.50	23.56	13.68	13.74	15.62	12.56	12.99	16.77	-36.53
9	25	MANUFACTURE OF RUBBER AND PLASTIC PRODUCTS	5	14.06	39.17	45.32	48.09	38.14	45.13	44.81	33.37	45.27	45.18	37.40	44.86	47.50	66.84	47.30	15.70
10	26	MANUFACTURE OF OTHER NON-METALLIC MINERAL PRODUCTS	1	1.32	106.76	85.85	99.23	94.78	90.48	77.76	80.16	93.11	109.07	66.98	87.09	120.37	68.84	42.37	-19.59
11	27	MANUFACTURE OF BASIC METALS	12	6.50	337.11	272.85	406.39	329.07	214.39	245.79	387.93	282.89	321.89	164.10	281.38	180.00	201.22	259.16	-19.06
12	28	MANUFACTURE OF FABRICATED METAL PRODUCTS EXCEPT MACHINERY AND EQUIPMENT	14	29.98	123.40	114.53	109.02	105.00	81.18	108.23	92.84	100.42	99.99	89.84	124.05	177.76	127.33	158.74	-7.19
13	29	MANUFACTURE OF MACHINERY AND EQUIPMENT	30	28.67	60.47	56.40	48.03	62.38	54.75	57.20	60.54	61.28	47.31	53.31	69.63	50.73	54.18	57.46	-6.73
14	30	MANUFACTURE OF OFFICE,ACCOUNTING &COMPUTING MACHINERY	1	1.33	0.00	0.00	0.00	0.00	0.00	0.00	0.00	0.00	0.00	0.00	0.00	0.00	0.00	0.00	0.00
15	31	MANUFACTURE OF ELECTRICAL MACHINERY AND APPARATUS	13	36.14	51.92	49.30	45.48	51.54	51.47	41.30	41.68	52.51	47.80	47.54	46.02	47.51	52.13	66.60	-5.05
16	32	MANUFACTURE OF RADIO,TELEVISION AND COMMUNICATION EQUIPMENT AND APPARATUS	9	30.11	92.38	93.49	94.06	76.07	98.37	86.02	101.68	106.54	87.70	78.93	78.64	98.01	101.67	114.22	1.20
17	33	MANUFACTURE OF MEDICAL,PRECISION AND OPTICAL INSTRUMENTS,WATCHES AND CLOCKS	2	7.17	17.41	11.43	0.00	23.15	38.61	7.26	14.36	5.56	1.77	4.28	30.45	6.18	5.47	0.02	-34.35
18	34	MANUFACTURE OF MOTOR VEHICLES,TRAILERS AND SEMI-TRAILERS	7	21.02	107.65	146.95	214.67	135.99	117.47	146.15	105.43	150.96	183.53	132.73	136.39	137.20	144.46	158.38	36.51
19	35	MANUFACTURE OF OTHER TRANSPORT EQUIPMENT	2	22.59	5.07	6.27	6.11	6.49	4.94	7.11	4.51	11.89	3.98	4.99	6.66	4.85	3.90	9.86	23.67
20	36	MANUFACTURE OF FURNITURE	4	19.29	76.00	77.17	63.16	51.35	77.93	72.80	70.84	85.28	75.17	91.06	75.72	81.01	85.64	96.02	1.54
		Manufacturing	268	703.07	132.01	139.14	141.90	148.88	147.53	143.95	143.50	130.88	128.84	126.71	139.61	141.22	136.19	140.44	5.40
21	40	Electricity	2	296.93	82.02	85.49	83.98	94.14	83.33	81.88	89.38	81.74	80.5	79.32	87.01	92.78	80.84	91.01	4.23
		General Index	270	1000.00	117.17	123.21	124.70	132.62	128.47	125.52	127.43	116.29	114.49	112.64	123.99	126.84	119.76	125.76	5.15

TABLE 3.3 : INDEX NUMBER OF INDUSTRIAL PRODUCTION AT 5 DIGIT LEVEL OF NIC 2004 DELHI (Base year 2004-05=100)																	
(APRIL 2011 TO MARCH 2012)																	
SNO	NIC2004	DESCRIPTION	WEIGHT	UNIT	BASE YEAR PRODUCTION	APRIL	MAY	JUNE	JULY	AUGUST	SEP	OCT	NOV	DEC	JAN	FEB	MARCH
1	15116	buffalo meat, fresh/frozen	7.2302	tonne	22423	58.01	62.13	60.42	65.61	63.42	71.02	95.15	31.41	45.54	53.14	59.56	59.83
2	15204	milk, skimmed or pasturised, non-flavoured	18.2317	k. litres	314675	269.84	275.99	262.67	288.32	300.95	293.16	282.39	272.62	286.73	273.21	276.72	291.32
3	15204	icecream	4.2260	litres	7803540	121.89	148.09	137.07	87.12	84.16	96.02	82.21	66.15	32.34	64.50	73.02	127.65
4	15311	gram powder (besan)	1.6086	tonne	156010	56.79	55.90	52.98	52.93	50.82	54.64	55.25	48.05	44.27	57.41	68.00	54.46
5	15311	wheat flour (atta)	1.0770	tonne	189754	56.23	58.22	49.89	57.46	56.26	54.62	50.47	45.87	47.95	50.60	44.23	38.89
6	15311	maida	0.9199	tonne	233585	35.93	36.49	33.82	40.59	38.01	39.46	40.51	37.25	39.10	37.92	36.80	34.19
7	15311	pulses, broken (churi/chunni)	0.3422	tonne	76011	52.33	56.06	52.89	43.57	69.92	54.26	54.06	31.31	32.95	36.97	60.69	61.62
8	15311	bran, wheat	0.2549	tonne	114332	18.04	18.41	18.28	19.46	18.22	19.04	18.04	16.76	19.08	19.04	18.59	17.09
9	15311	sooji (rawa)	0.1408	tonne	22837	42.35	38.46	37.94	51.81	41.20	48.18	43.61	30.84	33.89	41.67	43.35	36.94
10	15313	gram dal	1.3243	tonne	156205	17.36	18.28	16.13	16.62	15.23	17.87	15.09	11.37	12.43	13.27	14.84	17.68
11	15313	moong , milled	0.6338	tonne	70436	24.51	26.03	31.06	25.93	30.17	24.99	28.26	29.71	22.95	19.71	23.31	22.61
12	15313	arhar, milled (arhar dal)	0.2923	tonne	32397	3.22	4.04	2.15	3.11	2.59	4.07	1.22	2.85	1.56	4.15	3.37	3.70
13	15313	masur, milled	0.2906	tonne	27504	18.98	5.45	33.81	38.22	3.71	6.54	5.45	12.13	6.41	18.11	9.95	13.44
14	15412	biscuit, cookies	16.6655	tonne	35855	81.36	86.08	87.52	85.14	71.96	81.46	61.98	74.10	65.60	77.71	74.27	63.79
15	15433	sweetmeat confectionery	2.5216	kg	1133424	225.46	217.42	197.24	207.93	232.15	200.92	581.40	215.08	204.51	217.39	194.73	233.66
16	15543	mineral water, edible	1.4306	litres	74222756	121.90	134.68	113.29	110.08	103.80	93.25	100.88	97.03	92.01	81.66	103.96	122.66
17	15549	beverages, base	3.9497	tonne	40834	133.53	166.45	126.54	83.69	75.47	62.92	52.95	31.00	26.13	16.52	55.22	74.76
18	16005	snuff	0.2928	kg	260904	17.33	16.22	17.55	20.01	17.38	16.47	15.04	20.66	19.12	19.34	21.09	20.45
19	17211	bed cover, cotton	4.0956	nos	115634	201.37	222.60	99.75	6.54	198.03	0.00	85.18	215.73	60.77	242.07	285.06	83.69
20	17211	furnishing cloth, cloth	2.2063	metres	1173173	0.00	0.00	0.00	0.00	0.00	0.00	0.00	0.00	0.00	0.00	0.00	0.00
21	17214	quilts	1.7397	tonne	8599	2.65	0.28	0.84	1.53	1.81	1.53	10.88	5.58	3.35	6.28	0.28	14.23
22	17219	fabrics/cloth, rayon (not-knitted)	2.7142	metres	2145459	0.47	0.15	0.00	0.06	0.54	0.30	0.00	0.20	0.00	0.75	0.11	0.00
23	17219	cloth, plastic coated	2.4587	metres	802511	38.93	55.43	34.30	37.41	46.30	45.64	34.84	35.31	47.71	46.51	57.95	60.18
24	17219	hosiery goods, others - cotton	2.2883	nos	1330943	7.39	8.00	7.60	7.44	54.33	21.36	92.46	4.04	15.39	18.54	44.22	4.39
25	17299	neck labels, cotton	10.3652	th nos	342527	452.73	404.53	339.00	340.44	341.37	425.00	446.15	442.64	444.88	354.71	309.85	333.06
26	18101	garments, knitted- cotton	82.6284	dozen	2855837	64.13	73.22	56.99	43.11	63.33	42.77	35.32	34.34	37.53	62.77	52.84	63.21
27	18101	dress,others- cotton	46.6434	th nos	19296	116.11	93.22	98.94	89.92	52.92	60.07	54.10	75.19	71.64	133.39	139.99	136.94

TABLE 3.3 : INDEX NUMBER OF INDUSTRIAL PRODUCTION AT 5 DIGIT LEVEL OF NIC 2004 DELHI (Base year 2004-05=100)																	
(APRIL 2011 TO MARCH 2012)																	
SNO	NIC2004	DESCRIPTION	WEIGHT	UNIT	BASE YEAR PRODUCTION	APRIL	MAY	JUNE	JULY	AUGUST	SEP	OCT	NOV	DEC	JAN	FEB	MARCH
28	18101	garments, terene	21.7217	nos	11459337	61.94	41.56	33.66	27.79	24.86	30.37	20.20	30.61	45.37	50.67	85.22	70.48
29	18104	garments, leather	10.5172	nos	919543	47.09	78.89	57.33	78.47	73.55	56.89	66.72	38.51	62.64	69.10	55.17	33.55
30	19201	foot wear, others, leather	4.3644	pair	197587	769.67	891.73	992.58	350.15	565.07	513.54	540.36	593.36	1028.36	815.30	638.82	553.39
31	19201	shoe, racer	1.4756	th.pair	1486	51.68	55.72	37.95	17.76	18.57	21.80	16.96	74.29	16.15	13.73	22.61	18.57
32	19202	chappals, plastic / pvc	9.6529	pair	25475369	49.76	50.29	55.45	55.29	44.72	48.81	47.66	52.38	55.89	60.36	68.42	62.42
33	19202	shoes, plastic / pvc	6.1586	pair	12357310	81.37	80.02	78.46	88.42	94.75	103.43	90.64	78.03	97.28	97.82	83.62	103.88
34	19202	footwear, mixed materials	3.3784	pair	4466931	57.08	73.67	77.25	76.67	74.40	67.12	64.47	71.32	67.97	83.65	121.97	87.38
35	19202	chappals, rubber (incl. hawaii chappals)	3.3013	pair	9850905	85.97	73.83	74.02	68.34	87.23	98.03	62.30	43.15	56.80	78.72	88.58	97.27
36	21022	boxes, corrugated sheet	4.2417	nos	94576832	43.94	46.33	43.74	38.17	41.46	41.28	41.69	39.44	51.92	49.78	38.23	41.42
37	21093	greeting cards	5.3711	th nos	53441	38.69	24.59	25.06	23.51	38.49	58.88	33.91	41.81	32.54	20.19	31.32	14.51
38	22121	newspaper	55.3735	th nos	7583	780.64	795.36	775.89	806.75	808.81	786.02	788.87	784.75	807.07	771.78	760.23	774.15
39	22219	journals / periodicals	14.5436	nos	443948	148.91	105.12	130.19	130.14	145.15	128.97	118.51	171.05	433.37	323.69	167.15	155.51
40	22219	diaries	11.6511	nos	8280934	1.69	9.95	9.54	11.99	10.61	15.34	7.56	8.33	8.62	9.49	15.30	3.53
41	22219	printed lables	9.4160	th nos	748042	31.84	31.14	33.84	40.62	37.85	33.00	25.61	29.11	37.50	34.96	33.01	31.06
42	22219	cartons / boxes, paper	4.9547	th nos	279297	97.28	178.66	138.35	145.59	193.93	125.09	150.71	288.78	112.90	62.63	62.14	83.81
43	22219	covers, paper	4.6177	tonne	6635	107.97	173.26	169.83	52.81	41.96	41.05	77.23	13.74	44.85	26.77	70.35	47.20
44	22222	books	2.4820	nos	30600081	36.15	37.12	68.59	44.60	39.48	48.60	38.33	37.44	46.74	47.35	108.03	124.89
45	24139	plastic granules	25.9425	tonne	4367	33.25	39.84	48.91	56.88	42.04	42.59	40.39	36.82	42.04	39.29	41.77	42.87
46	24223	ink, printing	0.0357	kg	36138	33.70	37.85	71.46	89.95	73.12	47.32	46.32	57.65	40.88	35.93	63.75	54.12
47	24232	vaccine for polio	57.7637	nos	32745890	22.76	125.75	180.43	178.13	141.46	14.87	0.00	0.03	0.00	0.00	0.00	0.00
48	24233	syrup flavoured or not	7.0741	kg	4260840	15.14	22.27	19.38	27.13	20.77	32.01	30.06	42.75	49.16	18.51	16.46	61.36
49	24241	detergent powder	1.1416	tonne	11827	5.28	3.55	7.71	7.20	9.13	8.93	4.16	4.56	7.51	9.94	6.90	8.01
50	24243	detergent cake	1.3032	tonne	12613	19.98	19.79	19.41	21.12	25.97	24.36	22.36	27.21	24.83	20.64	15.51	25.21
51	24248	agarbattis	1.8255	th nos	984591	2.82	2.75	2.38	3.64	3.00	3.55	2.63	2.54	2.52	2.56	2.55	2.60
52	25202	fabrics, polyethylene fabrics	6.4400	tonne	3502	9.94	8.91	10.28	9.59	10.96	13.02	5.14	9.25	9.94	9.94	6.85	9.25
53	25202	bag, polythene	3.6046	kg	1101704	59.62	57.17	56.48	49.09	56.79	73.42	65.00	84.17	72.22	60.32	52.92	60.97
54	25206	components, plastic	0.9874	nos	747275	67.89	53.36	35.11	61.98	84.79	68.75	38.11	53.40	87.44	57.04	45.24	56.28

TABLE 3.3 : INDEX NUMBER OF INDUSTRIAL PRODUCTION AT 5 DIGIT LEVEL OF NIC 2004 DELHI (Base year 2004-05=100)																	
(APRIL 2011 TO MARCH 2012)																	
SNO	NIC2004	DESCRIPTION	WEIGHT	UNIT	BASE YEAR PRODUCTION	APRIL	MAY	JUNE	JULY	AUGUST	SEP	OCT	NOV	DEC	JAN	FEB	MARCH
55	25208	helmet, safety	3.0251	th nos	33	109.09	72.73	109.09	109.09	36.36	72.73	109.09	36.36	72.73	109.09	218.18	109.09
56	26999	welding rods	1.3224	th nos	81142	99.23	94.78	90.48	77.76	80.16	93.11	109.07	66.98	87.09	120.37	68.84	42.37
57	27141	frame for door/ window, iron /steel	0.7961	nos	1180974	10.97	12.58	11.08	12.99	13.17	10.64	11.60	11.66	10.22	11.46	13.92	9.47
58	27163	strips, stainless steel	1.9288	tonne	1736	252.30	248.16	218.43	214.29	189.40	217.05	210.14	232.26	237.10	244.01	244.70	235.71
59	27163	plates/flats/sheet etc., stainless steel.	0.4259	tonne	123	3843.90	2878.05	1346.34	1863.41	4058.54	2497.56	3112.19	614.63	2400.00	741.46	1024.39	1931.71
60	27190	wire, iron / m.s	1.5249	kg	3862174	310.90	255.25	232.62	220.47	246.03	199.38	209.76	210.49	192.39	225.49	231.20	235.24
61	27201	wire, copper coated / enameled	0.8761	kg	3492712	3.21	3.59	3.54	3.41	2.16	3.00	2.14	4.62	3.13	3.23	3.33	3.46
62	27310	ingot, iron /steel	0.9518	tonne	33222	35.25	35.00	34.57	44.17	43.56	44.39	33.19	24.38	48.55	29.84	35.54	40.74
63	28112	cabinet, iron /steel	3.0845	nos	663251	110.85	183.98	76.12	87.88	70.25	73.63	51.46	61.27	73.25	69.09	87.03	73.75
64	28112	steel structures	1.5717	tonne	9363	9.36	0.00	3.59	0.38	14.74	0.00	4.49	0.13	1.41	2.95	14.87	0.51
65	28910	flange	0.9148	nos	30083124	20.52	19.90	21.45	20.19	0.30	18.90	17.67	24.68	26.00	20.96	24.72	19.65
66	28910	castings & forging, iron/steel	0.6716	tonne	4512	116.22	109.31	86.70	118.88	77.66	86.44	228.19	171.81	196.01	227.39	257.98	275.00
67	28994	cistern fittings, iron /steel	16.5032	nos	253322	111.34	90.81	71.93	109.38	95.16	104.33	110.75	88.18	138.17	237.90	144.90	196.67
68	28994	sanitary fittings, non-ferrous-others	4.4030	no.	1529589	145.89	148.19	137.55	165.01	136.35	153.94	108.39	130.61	161.50	143.57	140.42	177.30
69	28997	pressure cooker	1.7581	nos	354487	190.79	192.08	183.74	195.21	173.40	155.48	187.39	172.32	173.11	207.08	182.19	171.79
70	28999	elastic rail clips	1.0748	tonne	3909	0.00	0.00	0.00	0.00	14.43	32.85	26.40	30.70	37.14	16.27	0.00	0.00
71	29131	bearing, ball/roller	3.0870	nos	10624214	23.22	14.41	16.37	25.00	24.41	17.88	20.33	20.31	29.84	19.63	17.71	15.80
72	29191	resistance /resistor	6.5698	nos	16514	16.28	10.17	33.64	29.65	18.02	17.15	6.54	13.15	20.78	30.59	12.64	9.52
73	29196	weighing scales	2.3169	nos	56535	234.42	295.80	248.13	246.43	296.16	334.75	213.32	233.70	245.77	192.98	245.65	284.19
74	29198	generator /alternator	2.6513	nos	336	14.28	32.14	39.29	53.57	89.28	64.29	53.57	42.86	64.29	39.29	42.86	75.00
75	29219	sprinkler	2.2934	set	3364978	22.59	38.52	47.88	59.86	54.76	60.65	89.38	136.55	123.73	74.88	30.39	48.14
76	29219	spares,agricultural machinery-others	0.8065	nos	2127684	29.53	20.18	16.14	23.75	35.10	29.37	30.94	55.52	23.05	32.17	56.66	44.68
77	29229	pressing machine	1.0090	nos	668	5.39	1.80	8.98	10.78	14.37	17.96	8.98	8.98	10.78	21.56	3.59	16.17
78	29231	machinery, others	0.1047	nos	807	230.48	120.45	273.60	209.67	261.71	215.61	92.19	136.80	102.60	184.39	126.39	98.14
79	29267	washing machines /laundry mach	1.0344	nos	33285	1.19	1.80	1.19	1.30	2.67	1.98	1.98	1.73	1.95	2.02	2.09	3.10
80	29297	machine tool & accessories-others	3.7187	nos	73610	39.84	118.24	59.68	79.88	68.08	51.35	51.82	49.33	106.91	36.26	86.27	65.01
81	29305	geysers	3.0519	nos	247665	0.61	0.25	2.28	3.94	5.28	5.07	3.59	5.06	4.14	2.15	2.26	0.39

TABLE 3.3 : INDEX NUMBER OF INDUSTRIAL PRODUCTION AT 5 DIGIT LEVEL OF NIC 2004 DELHI (Base year 2004-05=100)

(APRIL 2011 TO MARCH 2012)																	
SNO	NIC2004	DESCRIPTION	WEIGHT	UNIT	BASE YEAR PRODUCTION	APRIL	MAY	JUNE	JULY	AUGUST	SEP	OCT	NOV	DEC	JAN	FEB	MARCH
82	29308	gaskets & gland fittings	2.0309	nos	6360160	177.79	170.14	112.58	76.57	74.52	113.96	78.94	70.19	143.76	127.77	133.48	127.94
83	30007	computer peripherals	1.3275	nos	8932	0.00	0.00	0.00	0.00	0.00	0.00	0.00	0.00	0.00	0.00	0.00	0.00
84	31200	distribution boards	8.1642	nos	218447	2.36	2.05	3.11	6.14	1.43	1.68	2.56	0.66	0.33	1.10	2.59	2.22
85	31200	stabilizer/ constant voltage regulators	6.3590	nos	13242	17.58	39.15	32.80	24.65	18.58	16.22	10.42	11.33	6.16	7.52	30.18	24.56
86	31300	electrical wire & cables	11.2881	metres	841553928	64.37	68.80	57.39	52.64	72.64	76.47	71.36	70.46	77.13	71.84	73.91	97.58
87	31300	cable, pvc insulated	6.2158	km	62472	72.15	50.79	69.59	52.21	30.77	63.91	66.48	82.71	54.21	74.07	66.33	96.93
88	31908	welding set	4.1177	nos	3389697	82.01	122.63	132.61	89.21	88.76	126.48	102.44	80.52	100.50	94.51	103.12	128.44
89	32105	semiconductor device ex. transistor, diode & ic	9.4362	nos	285766160	108.23	80.19	150.03	73.97	96.78	68.04	74.25	54.90	51.40	105.11	101.37	117.02
90	32201	cabinet, plastic	0.2161	nos	1662223	25.71	24.08	12.94	20.12	0.00	1.04	0.00	2.34	0.00	0.00	0.00	0.00
91	32209	transformer	0.4400	nos	112752	27.80	3.63	3.45	8.59	6.04	11.64	4.52	6.56	6.57	20.68	15.76	3.02
92	32309	disc, compact	9.7058	nos	68562600	32.79	24.38	17.19	25.68	37.62	37.94	26.66	26.20	30.15	31.95	35.91	48.06
93	32309	amplifier	8.1486	nos	158587	139.85	118.97	123.91	156.87	171.93	218.96	162.71	149.72	145.92	162.35	169.00	185.24
94	32309	microphone	2.1663	nos	286602	154.94	148.29	168.75	164.68	175.38	188.53	163.33	175.88	183.96	146.46	171.96	165.29
95	33122	meter, electric -others	7.1674	nos	1555015	0.00	23.15	38.61	7.26	14.36	5.56	1.77	4.28	30.45	6.18	5.47	0.02
96	34300	motor vehicle,others & parts, n.e.c	14.9299	Nos	77039	268.74	158.88	140.02	170.94	120.24	170.59	224.92	149.80	151.29	165.66	176.31	195.87
97	34300	piston rings	2.6309	nos	18690322	5.96	8.15	9.91	6.58	9.81	11.03	6.08	6.86	8.30	4.81	10.01	6.12
98	34300	water pump assembly	2.1875	nos	343444	148.45	132.56	98.28	127.98	118.17	137.35	122.70	137.25	153.39	104.56	109.43	101.69
99	34300	cylinder head & block	1.2668	nos	31517	125.23	137.60	108.32	175.18	107.56	233.70	169.28	185.23	197.42	133.15	108.78	130.60
100	35914	clutch plates	22.5898	nos	1763444	6.11	6.49	4.94	7.11	4.51	11.89	3.98	4.99	6.66	4.85	3.90	9.86
101	36911	jewellery / ornament, gold - others	1.6118	gramme	702304	436.54	257.27	442.94	320.81	333.45	477.17	365.70	487.38	386.24	365.95	496.80	464.15
102	36991	dot pen with refill	8.5347	th nos	91885	0.00	0.00	0.00	0.00	0.00	0.00	0.00	0.00	0.00	0.00	0.00	0.00
103	36991	tipped nibs, fountain pen	5.9490	th nos	159121	65.89	78.59	81.85	81.85	78.51	84.64	74.57	83.14	85.65	88.13	77.59	127.86
104	36991	pen, signature	3.1958	th nos	6897	38.45	33.93	94.65	125.27	113.27	116.57	130.49	149.11	102.83	140.41	121.97	107.52
		Manufacturing	703.0684			141.90	148.88	147.53	143.95	143.50	130.88	128.84	126.71	139.61	141.22	136.19	140.44
105	40000	electricity	296.9316	Th.Kwh	10289339	83.98	94.14	83.33	81.88	89.38	81.74	80.50	79.32	87.01	92.78	80.84	91.01
		General Index	1000			124.70	132.62	128.47	125.52	127.43	116.29	114.49	112.64	123.99	126.84	119.76	125.76

CHAPTER – IV

USE BASED INDEX OF INDUSTRIAL PRODUCTION

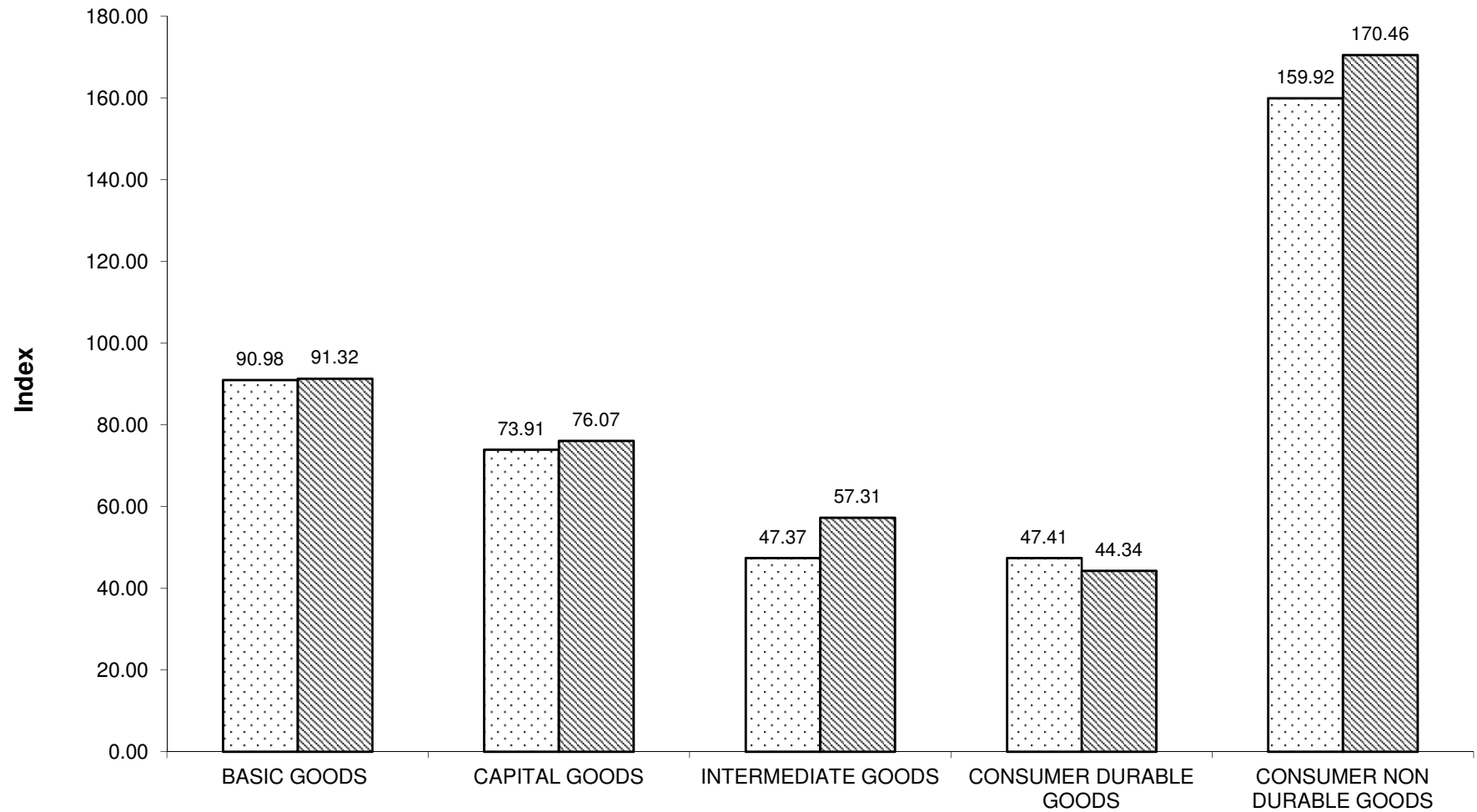
Different industries have been classified on the basis of uses of items produced by these industries to capture the performance of different industrial groups. On the analogy of the use based classification adopted by Central Statistical Organisation, item basket of production has been classified into four main groups. These groups consist basic goods, capital goods, Intermediate goods and consumer goods. Consumer goods are further subdivided into consumer durable goods and consumer non-durable goods. Use based monthly index of Industrial Production will provide the information regarding the performance of above mentioned industries which are classified according to their product usage.

Weighing diagram for use based categories reveals that consumer goods industry is predominant in the industrial production of NCT of Delhi and covers 50.74% of total production with a share of 3.39% for consumer durable goods and 47.35% for consumer non-durable goods. Share of Basic goods industries, Capital goods industries and Intermediate goods industries are 34.43% , 5.61% and 9.22% respectively when weights are allocated on the basis of their productions in the base year.

Performance of industrial groups as per Use Based Classification for the year 2011-12 has been presented in Table 4. It is evident that Intermediate Goods Industry has performed the best by registering growth of 20.98% during 2011-12 as compared to previous year 2010-11. Thus, Consumer Goods industry registered an overall growth of 6.33%. When consumer durable and non durable goods are analysed separately it has been observed that consumer non- durable goods industry has shown a growth of 6.59% whereas Consumer durable goods industry has shown a decline of 6.47%. Capital Goods Industry registered a Growth of 2.92% whereas Basic Goods industry has registered a marginal growth of 0.37%.

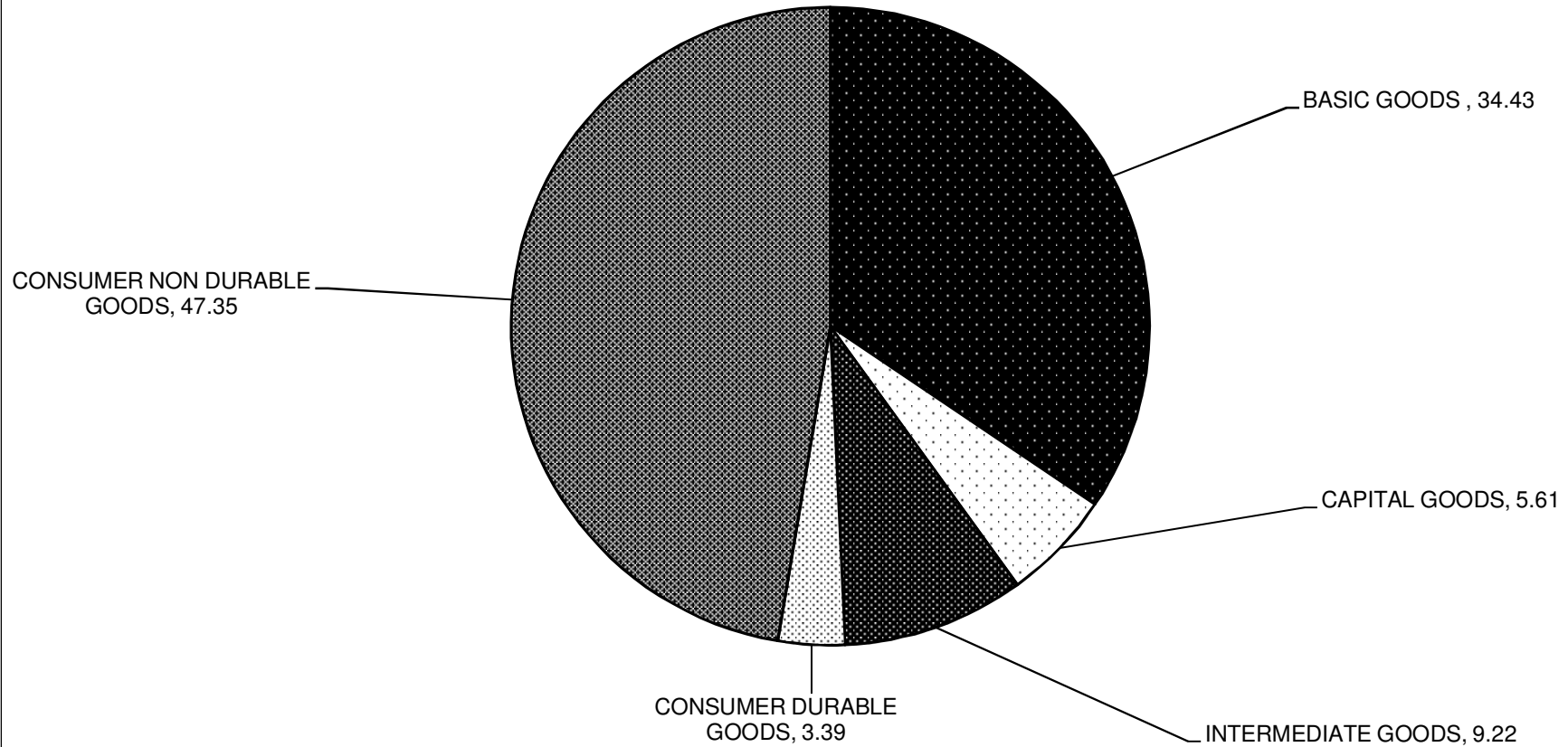
Weighing diagrams and annual average indices have also been depicted through graphical representation in the following pages.

[G-4] GRAPHICAL REPRESENTATION OF IIP AS PER USE BASED CLASSIFICATION



□ Year 2010-11 ▣ Year 2011-12

[G-5] WEIGHTED DIAGRAM FOR INDUSTRY GROUPS AS PER USE BASED CLASSIFICATION



**TABLE 4: INDEX NUMBER OF INDUSTRIAL PRODUCTION WITH THE USE BASED CLASSIFICATION OF ITEMS OF DIFFERENT INDUSTRY GROUPS
(APRIL 2011 TO MARCH 2012)**

S.No	NIC2004	DESCRIPTION	WEIGHT	Annual Average		Month-wise Index of Industrial Production 2011-2012											
				2010-11	2011-12	APRIL	MAY	JUNE	JULY	AUG	SEP	OCT	NOV	DEC	JAN	FEB	MARCH
BASIC GOODS																	
1	26999	welding rods	1.32243	106.76	85.85	99.23	94.78	90.48	77.76	80.16	93.11	109.07	66.98	87.09	120.37	68.84	42.37
2	27141	frame for door/ window, iron /steel	0.796148	10.36	11.65	10.97	12.58	11.08	12.99	13.17	10.64	11.60	11.66	10.22	11.46	13.92	9.47
3	27163	strips, stainless steel	1.928809	246.2	228.63	252.30	248.16	218.43	214.29	189.40	217.05	210.14	232.26	237.10	244.01	244.70	235.71
4	27163	plates/flats/sheet etc., stainless steel.	0.425921	3104.88	2192.68	3843.90	2878.05	1346.34	1863.41	4058.54	2497.56	3112.19	614.63	2400.00	741.46	1024.39	1931.71
5	27310	ingot, iron /steel	0.951812	33.01	37.43	35.25	35.00	34.57	44.17	43.56	44.39	33.19	24.38	48.55	29.84	35.54	40.74
6	28112	cabinet, iron /steel	3.084545	150.97	84.88	110.85	183.98	76.12	87.88	70.25	73.63	51.46	61.27	73.25	69.09	87.03	73.75
7	28112	steel structures	1.571722	12.78	4.37	9.36	0.00	3.59	0.38	14.74	0.00	4.49	0.13	1.41	2.95	14.87	0.51
8	28910	castings & forging, iron/steel	0.671648	109.04	162.63	116.22	109.31	86.70	118.88	77.66	86.44	228.19	171.81	196.01	227.39	257.98	275.00
9	28994	cistern fittings, iron /steel	16.50325	135.04	124.96	111.34	90.81	71.93	109.38	95.16	104.33	110.75	88.18	138.17	237.90	144.90	196.67
10	29196	weighing scales	2.31689	279.36	255.94	234.42	295.80	248.13	246.43	296.16	334.75	213.32	233.70	245.77	192.98	245.65	284.19
11	29219	sprinkler	2.293443	57.45	65.61	22.59	38.52	47.88	59.86	54.76	60.65	89.38	136.55	123.73	74.88	30.39	48.14
12	29219	spares,agricultural machinery-others	0.806538	38.9	33.09	29.53	20.18	16.14	23.75	35.10	29.37	30.94	55.52	23.05	32.17	56.66	44.68
13	29229	pressing machine	1.009001	17.37	10.78	5.39	1.80	8.98	10.78	14.37	17.96	8.98	8.98	10.78	21.56	3.59	16.17
14	29231	machinery, others	0.104708	127.76	171	230.48	120.45	273.60	209.67	261.71	215.61	92.19	136.80	102.60	184.39	126.39	98.14
15	31908	welding set	4.11771	125.1	104.27	82.01	122.63	132.61	89.21	88.76	126.48	102.44	80.52	100.50	94.51	103.12	128.44
16	32105	ex. transistor, diode & ic	9.436195	89.46	90.11	108.23	80.19	150.03	73.97	96.78	68.04	74.25	54.90	51.40	105.11	101.37	117.02
17	40000	electricity	296.9316	82.02	85.49	83.98	94.14	83.33	81.88	89.38	81.74	80.50	79.32	87.01	92.78	80.84	91.01
Total basic goods			344.2723	90.97886	91.31587	91.54	98.85	87.38	86.14	95.32	87.36	86.65	81.09	92.71	101.36	87.10	100.29

**TABLE 4: INDEX NUMBER OF INDUSTRIAL PRODUCTION WITH THE USE BASED CLASIFICATION OF ITEMS OF DIFFERENT INDUSTRY GROUPS
(APRIL 2011 TO MARCH 2012)**

S.No	NIC2004	DESCRIPTION	WEIGHT	Annual Average		Month-wise Index of Industrial Production 2011-2012											
				2010-11	2011-12	APRIL	MAY	JUNE	JULY	AUG	SEP	OCT	NOV	DEC	JAN	FEB	MARCH
		CONSUMER DURABLE GOODS															
1	18104	garments, leather	10.51718	58.97	59.83	47.09	78.89	57.33	78.47	73.55	56.89	66.72	38.51	62.64	69.10	55.17	33.55
2	25208	helmet, safety	3.02512	78.79	96.97	109.09	72.73	109.09	109.09	36.36	72.73	109.09	36.36	72.73	109.09	218.18	109.09
3	28997	pressure cooker	1.758108	190.49	182.05	190.79	192.08	183.74	195.21	173.40	155.48	187.39	172.32	173.11	207.08	182.19	171.79
4	29191	resistance /resistor	6.569789	19.68	18.18	16.28	10.17	33.64	29.65	18.02	17.15	6.54	13.15	20.78	30.59	12.64	9.52
5	29267	washing machines /laundry mach	1.034385	1.76	1.92	1.19	1.80	1.19	1.30	2.67	1.98	1.98	1.73	1.95	2.02	2.09	3.10
6	29305	geysers	3.051885	2.95	2.92	0.61	0.25	2.28	3.94	5.28	5.07	3.59	5.06	4.14	2.15	2.26	0.39
7	30007	computer peripherals	1.327478	0	0	0.00	0.00	0.00	0.00	0.00	0.00	0.00	0.00	0.00	0.00	0.00	0.00
8	31200	stabilizer/ constant voltage regulators	6.35897	41.5	19.93	17.58	39.15	32.80	24.65	18.58	16.22	10.42	11.33	6.16	7.52	30.18	24.56
9	32201	cabinet, plastic	0.216125	36.84	7.19	25.71	24.08	12.94	20.12	0.00	1.04	0.00	2.34	0.00	0.00	0.00	0.00
		TOTAL Consumer durable goods	33.85904	47.41346	44.33647	41.00	50.53	50.11	55.16	42.64	39.14	43.81	29.36	40.57	49.57	54.48	35.68

**TABLE 4: INDEX NUMBER OF INDUSTRIAL PRODUCTION WITH THE USE BASED CLASIFICATION OF ITEMS OF DIFFERENT INDUSTRY GROUPS
(APRIL 2011 TO MARCH 2012)**

S.No	NIC2004	DESCRIPTION	WEIGHT	Annual Average		Month-wise Index of Industrial Production 2011-2012											
				2010-11	2011-12	APRIL	MAY	JUNE	JULY	AUG	SEP	OCT	NOV	DEC	JAN	FEB	MARCH
CAPITAL GOODS																	
1	27190	wire, iron / m.s	1.524869	231.43	230.77	310.90	255.25	232.62	220.47	246.03	199.38	209.76	210.49	192.39	225.49	231.20	235.24
2	27201	wire, copper coated / enameled	0.876071	2.93	3.24	3.21	3.59	3.54	3.41	2.16	3.00	2.14	4.62	3.13	3.23	3.33	3.46
3	29198	generator /alternator	2.651307	49.11	50.89	14.28	32.14	39.29	53.57	89.28	64.29	53.57	42.86	64.29	39.29	42.86	75.00
4	29297	machine tool & accessories-others	3.718708	78.1	67.72	39.84	118.24	59.68	79.88	68.08	51.35	51.82	49.33	106.91	36.26	86.27	65.01
5	31300	electrical wire & cables	11.28807	55.93	71.22	64.37	68.80	57.39	52.64	72.64	76.47	71.36	70.46	77.13	71.84	73.91	97.58
6	31300	cable, pvc insulated	6.215787	73.4	65.01	72.15	50.79	69.59	52.21	30.77	63.91	66.48	82.71	54.21	74.07	66.33	96.93
7	32209	transformer	0.440042	5.47	9.85	27.80	3.63	3.45	8.59	6.04	11.64	4.52	6.56	6.57	20.68	15.76	3.02
8	32309	disc, compact	9.705784	30.33	31.21	32.79	24.38	17.19	25.68	37.62	37.94	26.66	26.20	30.15	31.95	35.91	48.06
9	32309	amplifier	8.148636	157.69	158.79	139.85	118.97	123.91	156.87	171.93	218.96	162.71	149.72	145.92	162.35	169.00	185.24
10	32309	microphone	2.166263	160.73	167.29	154.94	148.29	168.75	164.68	175.38	188.53	163.33	175.88	183.96	146.46	171.96	165.29
11	33122	meter, electric -others	7.167369	17.41	11.43	0.00	23.15	38.61	7.26	14.36	5.56	1.77	4.28	30.45	6.18	5.47	0.02
12	34300	water pump assembly	2.187513	103.86	124.32	148.45	132.56	98.28	127.98	118.17	137.35	122.70	137.25	153.39	104.56	109.43	101.69
Total Capital goods			56.09042	73.90846	76.07121	70.75	71.21	67.74	69.83	78.24	86.20	73.04	73.47	80.38	72.91	78.81	90.29

S.No	NIC2004	DESCRIPTION	WEIGHT	Annual Average		Month-wise Index of Industrial Production 2011-2012											
				2010-11	2011-12	APRIL	MAY	JUNE	JULY	AUG	SEP	OCT	NOV	DEC	JAN	FEB	MARCH
CONSUMER NON DURABLE GOODS																	
1	15116	buffalo meat, fresh/frozen	7.230164	52.01	60.44	58.01	62.13	60.42	65.61	63.42	71.02	95.15	31.41	45.54	53.14	59.56	59.83
2	15204	pasturised, non-flavoured	18.23167	255.92	281.16	269.84	275.99	262.67	288.32	300.95	293.16	282.39	272.62	286.73	273.21	276.72	291.32
3	15204	icecream	4.226001	80.34	93.35	121.89	148.09	137.07	87.12	84.16	96.02	82.21	66.15	32.34	64.50	73.02	127.65
4	15311	gram powder (besan)	1.60858	53.1	54.29	56.79	55.90	52.98	52.93	50.82	54.64	55.25	48.05	44.27	57.41	68.00	54.46
5	15311	wheat flour (atta)	1.077023	53.23	50.89	56.23	58.22	49.89	57.46	56.26	54.62	50.47	45.87	47.95	50.60	44.23	38.89
6	15311	maida	0.919872	34.5	37.51	35.93	36.49	33.82	40.59	38.01	39.46	40.51	37.25	39.10	37.92	36.80	34.19
7	15311	pulses, broken (churi/chunni)	0.342175	52.55	50.55	52.33	56.06	52.89	43.57	69.92	54.26	54.06	31.31	32.95	36.97	60.69	61.62
8	15311	bran, wheat	0.25492	17.76	18.34	18.04	18.41	18.28	19.46	18.22	19.04	18.04	16.76	19.08	19.04	18.59	17.09
9	15311	sooji (rawa)	0.14085	40.61	40.85	42.35	38.46	37.94	51.81	41.20	48.18	43.61	30.84	33.89	41.67	43.35	36.94
10	15313	gram dal	1.324347	15.54	15.51	17.36	18.28	16.13	16.62	15.23	17.87	15.09	11.37	12.43	13.27	14.84	17.68
11	15313	moong , milled	0.63384	24.85	25.77	24.51	26.03	31.06	25.93	30.17	24.99	28.26	29.71	22.95	19.71	23.31	22.61
12	15313	arhar, milled (arhar dal)	0.29225	3.78	3	3.22	4.04	2.15	3.11	2.59	4.07	1.22	2.85	1.56	4.15	3.37	3.70
13	15313	masur, milled	0.290571	15.27	14.35	18.98	5.45	33.81	38.22	3.71	6.54	5.45	12.13	6.41	18.11	9.95	13.44
14	15412	biscuit, cookies	16.66546	79.17	75.91	81.36	86.08	87.52	85.14	71.96	81.46	61.98	74.10	65.60	77.71	74.27	63.79
15	15433	sweetmeat confectionery	2.521602	209.73	243.99	225.46	217.42	197.24	207.93	232.15	200.92	581.40	215.08	204.51	217.39	194.73	233.66
16	15543	mineral water, edible	1.430631	102.71	106.27	121.90	134.68	113.29	110.08	103.80	93.25	100.88	97.03	92.01	81.66	103.96	122.66
17	15549	beverages, base	3.949721	81.27	75.43	133.53	166.45	126.54	83.69	75.47	62.92	52.95	31.00	26.13	16.52	55.22	74.76
18	16005	snuff	0.292752	17.6	18.39	17.33	16.22	17.55	20.01	17.38	16.47	15.04	20.66	19.12	19.34	21.09	20.45
19	17211	bed cover, cotton	4.09562	80.21	141.73	201.37	222.60	99.75	6.54	198.03	0.00	85.18	215.73	60.77	242.07	285.06	83.69

S.No	NIC2004	DESCRIPTION	WEIGHT	Annual Average		Month-wise Index of Industrial Production 2011-2012											
				2010-11	2011-12	APRIL	MAY	JUNE	JULY	AUG	SEP	OCT	NOV	DEC	JAN	FEB	MARCH
20	17211	furnishing cloth, cloth	2.20632	0	0	0.00	0.00	0.00	0.00	0.00	0.00	0.00	0.00	0.00	0.00	0.00	0.00
21	17214	quilts	1.73972	0.7	4.1	2.65	0.28	0.84	1.53	1.81	1.53	10.88	5.58	3.35	6.28	0.28	14.23
22	17219	fabrics/cloth, rayon (not-knitted)	2.714246	0.32	0.22	0.47	0.15	0.00	0.06	0.54	0.30	0.00	0.20	0.00	0.75	0.11	0.00
23	17219	cloth, plastic coated	2.458706	60.49	45.04	38.93	55.43	34.30	37.41	46.30	45.64	34.84	35.31	47.71	46.51	57.95	60.18
24	17219	hosiery goods, others - cotton	2.288311	14.62	23.76	7.39	8.00	7.60	7.44	54.33	21.36	92.46	4.04	15.39	18.54	44.22	4.39
25	17299	neck labels, cotton	10.36522	414.41	386.2	452.73	404.53	339.00	340.44	341.37	425.00	446.15	442.64	444.88	354.71	309.85	333.06
26	18101	garments, knitted-cotton	82.62835	43.71	52.46	64.13	73.22	56.99	43.11	63.33	42.77	35.32	34.34	37.53	62.77	52.84	63.21
27	18101	dress,others- cotton	46.6434	83.34	93.54	116.11	93.22	98.94	89.92	52.92	60.07	54.10	75.19	71.64	133.39	139.99	136.94
28	18101	garments, terene	21.72167	44.64	43.56	61.94	41.56	33.66	27.79	24.86	30.37	20.20	30.61	45.37	50.67	85.22	70.48
29	19201	foot wear, others, leather	4.364447	673.87	687.7	769.67	891.73	992.58	350.15	565.07	513.54	540.36	593.36	1028.36	815.30	638.82	553.39
30	19201	shoe, racer	1.475628	33.51	30.48	51.68	55.72	37.95	17.76	18.57	21.80	16.96	74.29	16.15	13.73	22.61	18.57
31	19202	chappals, plastic / pvc	9.652947	57.11	54.29	49.76	50.29	55.45	55.29	44.72	48.81	47.66	52.38	55.89	60.36	68.42	62.42
32	19202	shoes, plastic / pvc	6.158598	82.21	89.81	81.37	80.02	78.46	88.42	94.75	103.43	90.64	78.03	97.28	97.82	83.62	103.88
33	19202	footwear, mixed materials	3.378412	73	76.91	57.08	73.67	77.25	76.67	74.40	67.12	64.47	71.32	67.97	83.65	121.97	87.38
34	19202	chappals, rubber (incl. hawaii chappals)	3.301265	92.1	76.19	85.97	73.83	74.02	68.34	87.23	98.03	62.30	43.15	56.80	78.72	88.58	97.27
35	21093	greeting cards	5.371131	65.09	31.96	38.69	24.59	25.06	23.51	38.49	58.88	33.91	41.81	32.54	20.19	31.32	14.51
36	22121	newspaper	55.37351	686.72	786.69	780.64	795.36	775.89	806.75	808.81	786.02	788.87	784.75	807.07	771.78	760.23	774.15
37	22219	journals / periodicals	14.54359	153.32	179.81	148.91	105.12	130.19	130.14	145.15	128.97	118.51	171.05	433.37	323.69	167.15	155.51
38	22219	diaries	11.65107	5.7	9.33	1.69	9.95	9.54	11.99	10.61	15.34	7.56	8.33	8.62	9.49	15.30	3.53

S.No	NIC2004	DESCRIPTION	WEIGHT	Annual Average		Month-wise Index of Industrial Production 2011-2012											
				2010-11	2011-12	APRIL	MAY	JUNE	JULY	AUG	SEP	OCT	NOV	DEC	JAN	FEB	MARCH
39	22219	printed lables	9.416032	39.41	33.29	31.84	31.14	33.84	40.62	37.85	33.00	25.61	29.11	37.50	34.96	33.01	31.06
40	22219	cartons / boxes, paper	4.954676	159.82	136.66	97.28	178.66	138.35	145.59	193.93	125.09	150.71	288.78	112.90	62.63	62.14	83.81
41	22219	covers, paper	4.617657	38.19	72.25	107.97	173.26	169.83	52.81	41.96	41.05	77.23	13.74	44.85	26.77	70.35	47.20
42	22222	books	2.481973	36.12	56.44	36.15	37.12	68.59	44.60	39.48	48.60	38.33	37.44	46.74	47.35	108.03	124.89
43	24223	ink, printing	0.035692	55.74	54.34	33.70	37.85	71.46	89.95	73.12	47.32	46.32	57.65	40.88	35.93	63.75	54.12
44	24232	vaccine for polio	57.76367	98.14	55.29	22.76	125.75	180.43	178.13	141.46	14.87	0.00	0.03	0.00	0.00	0.00	0.00
45	24233	syrup flavoured or not	7.07406	45.43	29.58	15.14	22.27	19.38	27.13	20.77	32.01	30.06	42.75	49.16	18.51	16.46	61.36
46	24241	detergent powder	1.141638	12.09	6.91	5.28	3.55	7.71	7.20	9.13	8.93	4.16	4.56	7.51	9.94	6.90	8.01
47	24243	detergent cake	1.303232	50.67	22.2	19.98	19.79	19.41	21.12	25.97	24.36	22.36	27.21	24.83	20.64	15.51	25.21
48	24248	agarbattis	1.825467	2.78	2.8	2.82	2.75	2.38	3.64	3.00	3.55	2.63	2.54	2.52	2.56	2.55	2.60
49	25202	fabrics, polyethylene fabrics	6.440019	2.4	9.42	9.94	8.91	10.28	9.59	10.96	13.02	5.14	9.25	9.94	9.94	6.85	9.25
50	25202	bag, polythene	3.60461	67.09	62.35	59.62	57.17	56.48	49.09	56.79	73.42	65.00	84.17	72.22	60.32	52.92	60.97
51	36911	jewellery / ornament, gold -others	1.6118	468.86	402.87	436.54	257.27	442.94	320.81	333.45	477.17	365.70	487.38	386.24	365.95	496.80	464.15
52	36991	dot pen with refill	8.534691	19.87	0	0.00	0.00	0.00	0.00	0.00	0.00	0.00	0.00	0.00	0.00	0.00	0.00
53	36991	tipped nibs, fountain pen	5.949006	72.69	84.02	65.89	78.59	81.85	81.85	78.51	84.64	74.57	83.14	85.65	88.13	77.59	127.86
54	36991	pen, signature	3.195831	33.88	106.2	38.45	33.93	94.65	125.27	113.27	116.57	130.49	149.11	102.83	140.41	121.97	107.52
		Total Consumer non durable goods	473.5146	159.9201	170.4639	171.65	185.44	186.07	178.25	178.50	157.41	154.95	158.37	170.96	171.33	165.45	167.19

**TABLE 4: INDEX NUMBER OF INDUSTRIAL PRODUCTION WITH THE BASED CLASSIFICATION OF ITEMS OF DIFFERENT INDUSTRY GROUPS
(APRIL 2011 TO MARCH 2012)**

S.No	NIC2004	DESCRIPTION	WEIGHT	Annual Average		Month-wise Index of Industrial Production 2011-2012											
				2010-11	2011-12	APRIL	MAY	JUNE	JULY	AUG	SEP	OCT	NOV	DEC	JAN	FEB	MARCH
INTERMEDIATE GOODS																	
1	21022	boxes, corrugated sheet	4.241724	39.66	43.12	43.94	46.33	43.74	38.17	41.46	41.28	41.69	39.44	51.92	49.78	38.23	41.42
2	24139	plastic granules	25.94249	41.58	42.23	33.25	39.84	48.91	56.88	42.04	42.59	40.39	36.82	42.04	39.29	41.77	42.87
3	25206	components, plastic	0.987379	55.68	59.12	67.89	53.36	35.11	61.98	84.79	68.75	38.11	53.40	87.44	57.04	45.24	56.28
4	28910	flange	0.9148	17.94	19.58	20.52	19.90	21.45	20.19	0.30	18.90	17.67	24.68	26.00	20.96	24.72	19.65
5	28994	sanitary fittings, non-ferrous-others	4.40299	121.35	145.73	145.89	148.19	137.55	165.01	136.35	153.94	108.39	130.61	161.50	143.57	140.42	177.30
6	28999	elastic rail clips	1.074751	24.76	13.15	0.00	0.00	0.00	0.00	14.43	32.85	26.40	30.70	37.14	16.27	0.00	0.00
7	29131	bearing, ball/roller	3.08698	26.16	20.41	23.22	14.41	16.37	25.00	24.41	17.88	20.33	20.31	29.84	19.63	17.71	15.80
8	29308	gaskets & gland fittings	2.03089	123.68	117.3	177.79	170.14	112.58	76.57	74.52	113.96	78.94	70.19	143.76	127.77	133.48	127.94
9	31200	distribution boards	8.164207	1.21	2.18	2.36	2.05	3.11	6.14	1.43	1.68	2.56	0.66	0.33	1.10	2.59	2.22
10	34300	motor vehicle,others & parts, n.e.c	14.92988	120.62	174.44	268.74	158.88	140.02	170.94	120.24	170.59	224.92	149.80	151.29	165.66	176.31	195.87
11	34300	piston rings	2.630885	6.76	7.8	5.96	8.15	9.91	6.58	9.81	11.03	6.08	6.86	8.30	4.81	10.01	6.12
12	34300	cylinder head & block	1.26675	170.8	151	125.23	137.60	108.32	175.18	107.56	233.70	169.28	185.23	197.42	133.15	108.78	130.60
13	35914	clutch plates	22.58983	5.07	6.27	6.11	6.49	4.94	7.11	4.51	11.89	3.98	4.99	6.66	4.85	3.90	9.86
Total Intermediate goods			92.26356	47.37241	57.30645	71.03	55.00	51.85	61.54	46.21	59.82	61.85	50.06	56.79	54.72	55.96	62.83

**TABLE 4: INDEX NUMBER OF INDUSTRIAL PRODUCTION WITH THE USE BASED CLASIFICATION OF ITEMS OF DIFFERENT INDUSTRY GROUPS
(APRIL 2011 TO MARCH 2012)**

SNO	DESCRIPTION	WEIGHT	Annual Average		Month-wise Index of Industrial Production 2011-2012											
			2010-11	2011-12	APRIL	MAY	JUNE	JULY	AUG	SEP	OCT	NOV	DEC	JAN	FEB	MARCH
1	BASIC GOODS	344.27	90.98	91.32	91.54	98.85	87.38	86.14	95.32	87.36	86.65	81.09	92.71	101.36	87.10	100.29
2	CAPITAL GOODS	56.09	73.91	76.07	70.75	71.21	67.74	69.83	78.24	86.20	73.04	73.47	80.38	72.91	78.81	90.29
3	INTERMEDIATE GOODS	92.26	47.37	57.31	71.03	55.00	51.85	61.54	46.21	59.82	61.85	50.06	56.79	54.72	55.96	62.83
4	CONSUMER GOODS	507.37	152.41	162.05	162.94	176.44	176.99	170.03	169.43	149.51	147.53	149.76	162.26	163.20	158.04	158.41
	GENERAL INDEX	1000.00	117.17	123.21	124.70	132.62	128.47	125.52	127.43	116.29	114.49	112.64	123.99	126.84	119.76	125.76
4a	CONSUMER DURABLE GOODS	33.86	47.41	44.34	41.00	50.53	50.11	55.16	42.64	39.14	43.81	29.36	40.57	49.57	54.48	35.68
4b	CONSUMER NON DURABLE GOODS	473.51	159.92	170.46	171.65	185.44	186.07	178.25	178.50	157.41	154.95	158.37	170.96	171.33	165.45	167.19